

The Pavilion

Technical Specifications



DELRAY BEACH
CENTER FOR THE ARTS
at OLD SCHOOL SQUARE

Delray Beach Center for the Arts
51 North Swinton Avenue
Delray Beach, FL 33444
(561) 243-7922
Fax (561) 243-7018

Technical Director

Holland Ryan
Cell: (561) 504-5138
Office: (561) 243-7922 ext. 320
Fax: (561) 243-7018
Email: Hcryan@delrayarts.org
Hcryan@gmail.com

House Crew

Jayson Tomasheski
Master Electrician:
Office: (561) 243-7922 ext. 320
Fax: (561) 243-7018
Email: Jtomasheski@delrayarts.org

General Information

Seating Capacity

3500

Loading Dock

The loading dock is located off NE 1st Avenue on the east side of the building (west side of the street). There is one bay. The dock is 3'6" high with a 10' x 10' roll drop door.

Shop

There is a fully equipped shop adjacent to the building where repairs may be made.

Truck and Bus Parking

Overnight parking may be available on the property. This must first be discussed with and approved by the Technical Director.

Directions to Old School Square

From I-95 south

1. Exit at Atlantic Ave East.
2. Continue East on Atlantic Ave approximately 1.5 miles.
3. Turn left onto Swinton Ave.
4. Go 2 blocks and turn right onto NE 2nd Street.
5. Go 1 block and turn right onto NE 1st Ave.
6. The loading dock entrance is just past NE 1st Street (about 2 blocks) on the west side of the road.

From I-95 north

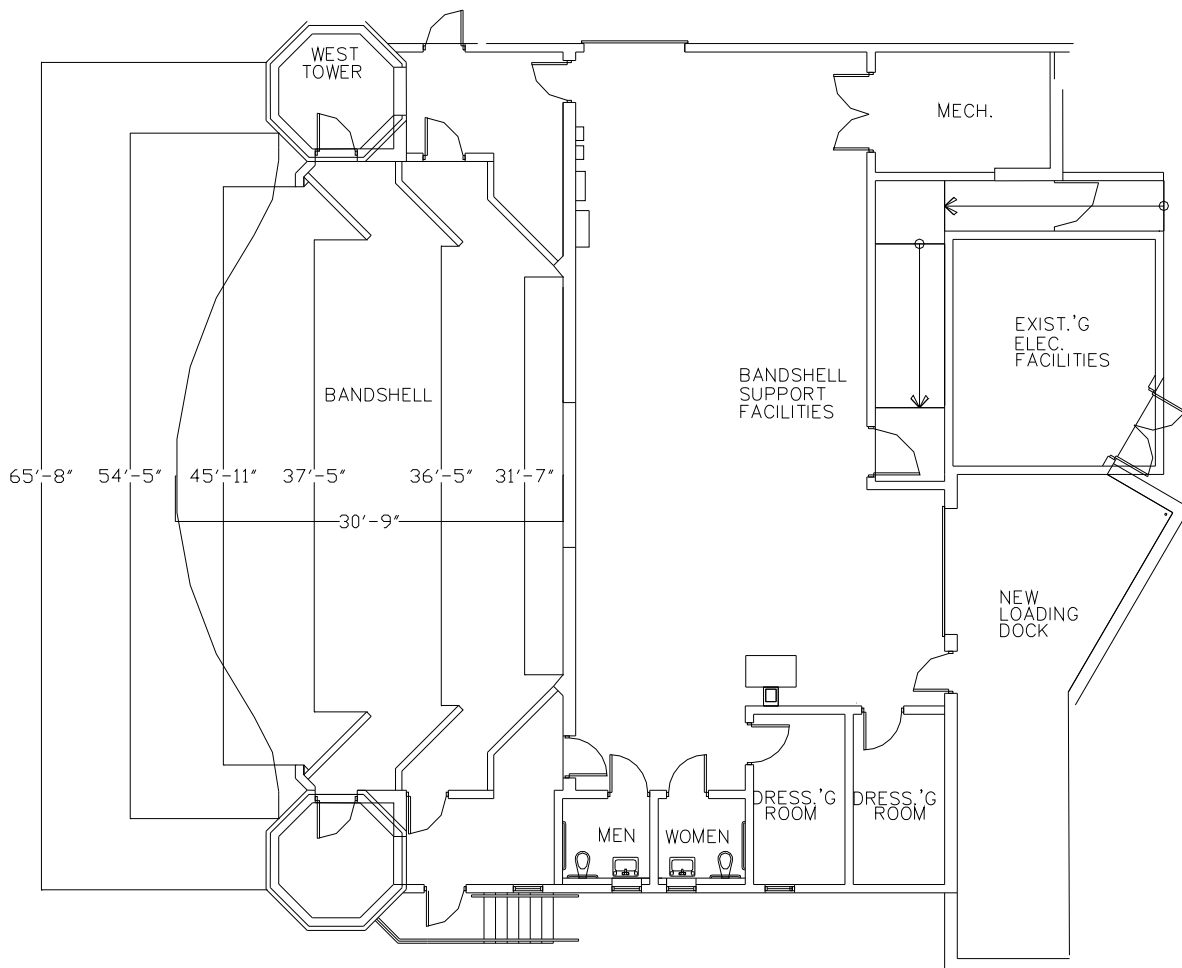
1. Exit at Atlantic Ave
2. Follow from number 2 above

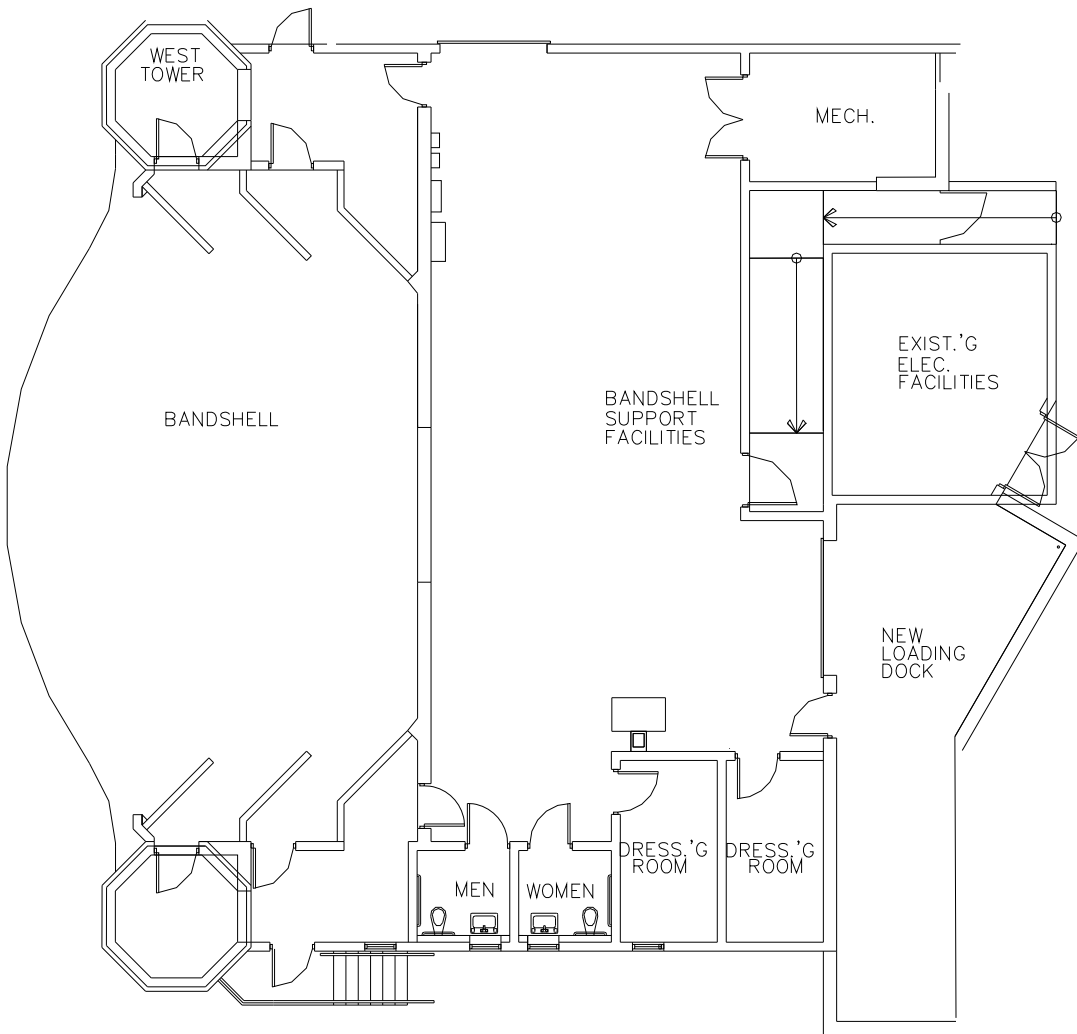
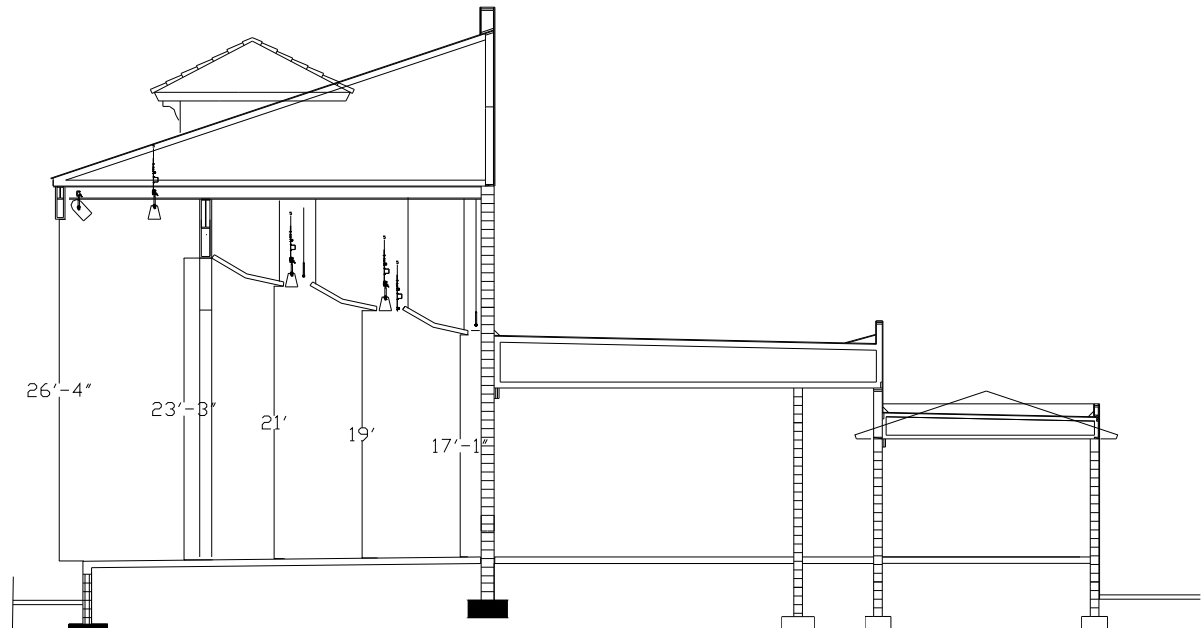
From Florida's Turnpike

1. Exit at Delray Beach.
2. Continue East on Atlantic Ave approximately 5 miles.
3. Follow from number 3

Stage Specifications

The stage floor is poured concrete. Access to the stage is via 4 (2 left and 2 right) 3' x 7' doors. Scenery may be loaded thru the 12' x 12' opening on the rear wall. The opening is covered by 2 12' x 6' doors on the on stage side and a roll drop door on the rear. Doors open on stage. Please take all measurements from the ground plan and section drawing that follow.





Rigging Specifications

The Pavilion was not designed for overhead rigging. However, it may be possible to spot points from the electrics. Please discuss all rigging with the technical director prior to load in.

Lighting System

Console

E.T.C. Insight 3x with Remote Focus Unit

Dimmers

E.T.C. Sensor Dimmer Racks

48 Dual 20A modules for a total of 96 dimmers

Lighting instruments

18 PAR 64

12 6' 3 circuit 500w Strip Lights

Circuit location

1-24 SR Tower 4 - 6 circuit multi-pin "VEAM" connectors with circuits 1 thru 6 additionally broken out into grounded stage pin connectors.

1-24 SL Tower 4 - 6 circuit multi-pin "VEAM" connectors with circuits 19 thru 24 additionally broken out into grounded stage pin connectors.

25-48 1st Electric 16 grounded stage pin connectors on 18" pigtails

49-64 2nd Electric 16 grounded stage pin connectors on 18" pigtails

65-80 3rd Electric 16 grounded stage pin connectors on 18" pigtails

81-96 4th Electric 16 grounded stage pin connectors on 18" pigtails

Audio System

Console

Allen & Heath iLive T112 with an iDR-48 48 in X 24 out stagebox

Front of House PA

12 TurboSound TFA-600HWDP Self Powered, 3-way Flex array speakers (6 per side)

6 TurboSound TSW-218DP Self Powered, Dual 18" Subwoofers (3 per side)

Stage Monitors

8 TurboSound NuQ-12DP Self Powered, Biamped, stage monitors

1 TurboSound B15DP Self Powered, Single 15" subwoofer

The front of house PA may be ground stacked or flown. All necessary rigging hardware and motors are available.

The audio system is powered by a distribution box with 30 – 20AMP circuits, 13 of which are available for band equipment.

Wireless Microphones

- 4 Sennheiser SKM G3 500 handheld transmitter w/E945 microphone capsule
- 1 Sennheiser SKM G3 100 handheld transmitter w/E845 microphone capsule
- 3 Sennheiser G3 100 body pack transmitter with Countryman B3 lavalier

- 4 Sennheiser SKM G3 500 Series receiver
- 1 Sennheiser SKM G2 300 Series receiver
- 1 Sennheiser SKM G3 100 Series receiver

Microphones *

1 Audio-Technica AT8531	1 Audio-Technica AT8471	3 Beyer-Dynamic MPC65V	7 Sennheiser E604
1 Sennheiser E609B	3 Sennheiser E609S	4 Sennheiser E614	8 Sennheiser E845
3 Sennheiser E905	2 Sennheiser E912	2 Sennheiser K6-ME64	2 Sennheiser MK4
2 Sennheiser MD421	4 Shure SM57	4 Shure SM58	3 Shure Beta SM58a
1 Shure SM87	1 Shure SM94		

Direct Input Boxes

- 5 Whirlwind IMP 2 passive
- 1 ProCo DB-1 passive
- 1 Rapco db-1 passive
- 1 Countryman Type 85 active
- 2 Samson S-direct SD100 active
- 1 Radial ProAV2
- 2 Whirlwind PCDI

Company Switches

- 1 - 400 amp company switch with Camloc connectors or lugs
- 1 - 200 amp company switch with Camloc connectors or lugs

Dressing Rooms

There are 2 dressing rooms. Both are 7’ x 14’. The dressing rooms are air-conditioned and have program monitor and Clear-Com. There are no permanent dressing tables or mirrors. 2 Restrooms are located on the same side of the building. There are no shower facilities.

* Shared with the Crest Theatre

Within 3 miles of Crest Theatre:

Hyatt Place Delray Beach	104 NE. 2 nd Ave. Delray Beach, FL 33444	(561) 330-3530
Fairfield Inn & Suites	910 W Atlantic Ave Delray Beach Fl 33444	(561) 279-2900
The Colony Hotel & Cabana Club	525 E. Atlantic Ave. Delray Beach, FL 33483	(561) 276-4123
Crane's BeachHouse Hotel	82 Gleason Street Delray Beach, FL 33483	(561) 278-1700
Delray Beach Marriot	10 North Ocean Blvd. Delray Beach, FL 33483	(561) 274-3200

Within 8 miles of Crest Theatre:

Hilton Garden Inn	8201 Congress Ave. Boca Raton, FL 33487	(561) 988-6110
Holiday Inn Express	488 W. Boynton Beach Blvd. Boynton Beach, FL 33435	(561) 734-9100
Best Western University Inn	2700 N. Federal Hwy Boca Raton, FL 33432	(561) 395-5225

Local Dining – Atlantic Avenue & area walking distance

SPoT Coffee* (Coffee Shop and Café)	44 E. Atlantic Avenue	(561) 445-4041
House of Siam**(Thai/Sushi)	25 NE 2nd Ave # 116	(561) 330-9191
Johnny Browns*(American Burger Joint)	301 E. Atlantic Avenue	(561) 243-9911
Mellow Mushroom*(Pizza)	25 SE. 6 th Ave	(561) 330-3040
Nature's Way Café**(Health Food)	20 W. Atlantic Avenue	(561) 272-6200
Cabana El Rey **(Cuban)	105 E. Atlantic Avenue	(561) 274-9090
Tryst* (American Gastro Pub)	4 E. Atlantic Avenue	(561) 921-0201
Lemongrass Asian Bistro**	420 E. Atlantic Avenue	(561) 278-5050
The Office**(Burgers)	201 E. Atlantic Avenue	(561) 276-3600
Cut 432*** (Steak House)	432 E. Atlantic Avenue	(561) 272-9898
32 East*** (New American Fare)	32 E. Atlantic Avenue	(561) 276-7868
Vic & Angelo's **(Italian)	290 E. Atlantic Avenue	(561) 278-9570

Blue Anchor Pub* (Irish Pub)	804 E. Atlantic Avenue	(561) 272-7272
Boston's** (Seafood, American)	40 South Ocean Blvd.	(561) 278-3364
City Oyster*** (Seafood, American)	213 E. Atlantic Avenue	(561) 272-0220
DaDa** (Gastro Pub)	52 N. Swinton Avenue	(561) 330-3232
Doc's All American* (American)	10 N. Swinton Avenue	(561) 278-3627
Green Owl Restaurant* (Breakfast)	330 E. Atlantic Avenue	(561) 272-7766
Sazio's** (Italian)	131 E. Atlantic Avenue	(561) 272-5540
Christina's* (Breakfast/Brunch)	263 NE 2 nd Ave	(561) 278-3200
El Camino** (Mexican Soul Food)	15 NE 2 nd Ave	(561) 865-5350
Racks ** (Seafood)	5 SE 2 nd Ave	(561) 450-6718

*Inexpensive **Moderate ***Expensive